

# THE TECHNICAL BUILDING BLOCKS OF UNISON PLANNING™

OMP connects every supply chain player - leaders, planners, site managers - in one comprehensive solution, freeing them to make decisions in unison. To achieve this, the solution rests on a number of technical building blocks, powered by human expertise and commitment. Here's an overview of how each building block contributes to working in unison.



OMP.

## One shared model reflecting reality



Industry-specific

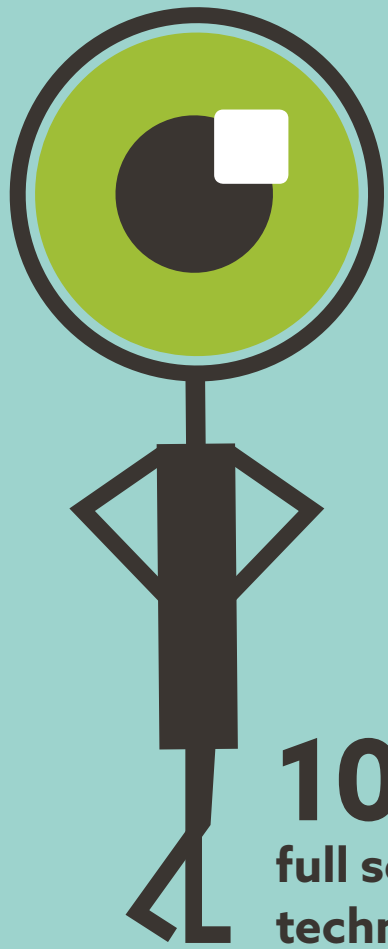
Reality-based

Shared across all the players

At the core of Unison Planning™ is the digital model, a virtual representation of your supply chain, with all the production, storage and distribution assets included, along with their capacities, performance capabilities and constraints. This flexible model, harnessed to industry-specific logic, reflects reality at exactly the level of detail needed to plan effectively.

**OMP.**

# Unifying strategy, tactics and operations



**100%**  
**full scope planning  
technology**

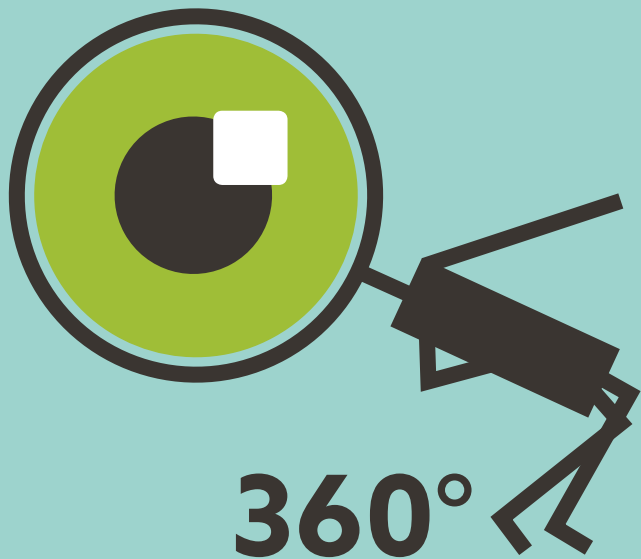
From strategic to operational  
decision-making

Automatic information  
syncing across functions

Unison Planning™ integrates every supply chain planning function within a single comprehensive solution. It includes strategic functions such as network design, tactical functions such as demand management, sales & operations planning, and operational functions such as master planning and scheduling. Planning data, decisions and constraints are automatically exchanged across the different functions using the shared model as a solid foundation.

**OMP.**

## Built-in intelligence at your fingertips



**360°**  
**complete**  
**fit-for-purpose**  
**intelligence**

Superior solvers,  
analytics and AI

Attuned to specific  
industries

Unison Planning™ comes complete with powerful built-in intelligence such as wide-ranging solvers, a formidable array of analytical tools, and advanced AI and machine learning components. All these building blocks are carefully fine-tuned to fully address industry-specific issues and dilemmas.

**OMP.**

## A secure cloud platform for a great experience



**100%**  
fully cloud-enabled

Microsoft Azure powered

Safe and secure

Scalable, maintainable  
and user-friendly

Unison Planning™ is fully cloud-enabled, powered by Microsoft Azure, and ISAE 3402 certified. It is designed for swift scalability, easy maintenance and a great user experience. Access is secured following the SAML 2.0 standard, and data is encrypted, both in transit and while at rest.

**OMP.**



## Seamless future-proof integration

Low IT impact

Seamless integration

Future-proof

Unison Planning™ seamlessly integrates with company-specific systems and processes, including ERP systems and BI tools. Certified interfaces allow data flows of any type to be set up quickly and seamlessly. Integration solutions are future proof. And with our certified SAP integration, we assume full ownership of conversion and failure handling.

**OMP.**

# Expert services delivering beyond expectation



**unique expert services resource**

Involved at every stage

Comprehensive expert services

Taking ownership of the solution

Unison Planning™ fulfills its promise through a formidable array of OMP expert services. OMP expert teams include solution architects, analysts, data scientists, industry experts, consultants, designers, trainers, coaches, and application specialists, among others. Involved at every stage of the project, including outline planning, solution design, development, implementation and support, they take ownership of the solution and they're committed to delivering beyond expectation.

**OMP.**